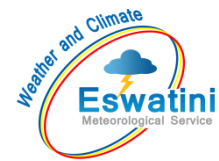


AGROMETEOROLOGICAL BULLETIN

Doc No: TEA 3/3/7/2 F-004
Revision No: 1
Effective Date: 01.07.2017
Page No: 1 of 5
Approved by:



REPORTING PERIOD:
21 – 31 JANUARY 2025



ISSUE No.: 12

SEASON: 2024/25

RELEASED: 04/02/2025

CONTENTS

CONTENTS	1
HIGHLIGHTS	1
RAINFALL AND TEMPERATURES	2
RAINFALL	2
TEMPERATURES	3
MAIZE AND OTHER CROPS.....	3
MAIZE CROP STAGE AND CONDITION..	3
OTHER CROPS	3
CURRENT FARMING ACTIVITY	3
LIVESTOCK AND PASTURES	3
WATER SITUATION	4
MEDIUM-TERM OUTLOOK	4
RAINFALL	4
TEMPERATURE.....	4
SOIL MOISTURE	4
WIND SPEED	4

HIGHLIGHTS

- **Reduced rainfall observed...**
- **Good vegetation condition...**
- **Weeding farming activities...**
- **Improvement in rainfall is anticipated...**
- **Cool, warm to hot temperatures forecasted...**
- **Improvement in soil moisture expected...**

Compiled and Issued by: Agrometeorological Unit,

Swaziland Meteorological Service, Ministry of Tourism and Environmental Affairs.

Box 2652, Mbabane, Swaziland. ☎ (+268) 2404 8859 / 2404 6274. Fax: 2404 1530

E-mail: dudu@swazimet.gov.sz

AGROMETEOROLOGICAL BULLETIN

Doc No: TEA 3/3/7/2 F-004

Revision No: 1

Effective Date: 01.07.2017

Page No: 2 of 5

Approved by:

RAINFALL AND TEMPERATURES

RAINFALL

Below normal rainfall was observed, in the 3rd dekad of January 2025 (**Figure 1**) and (**Map 1**).

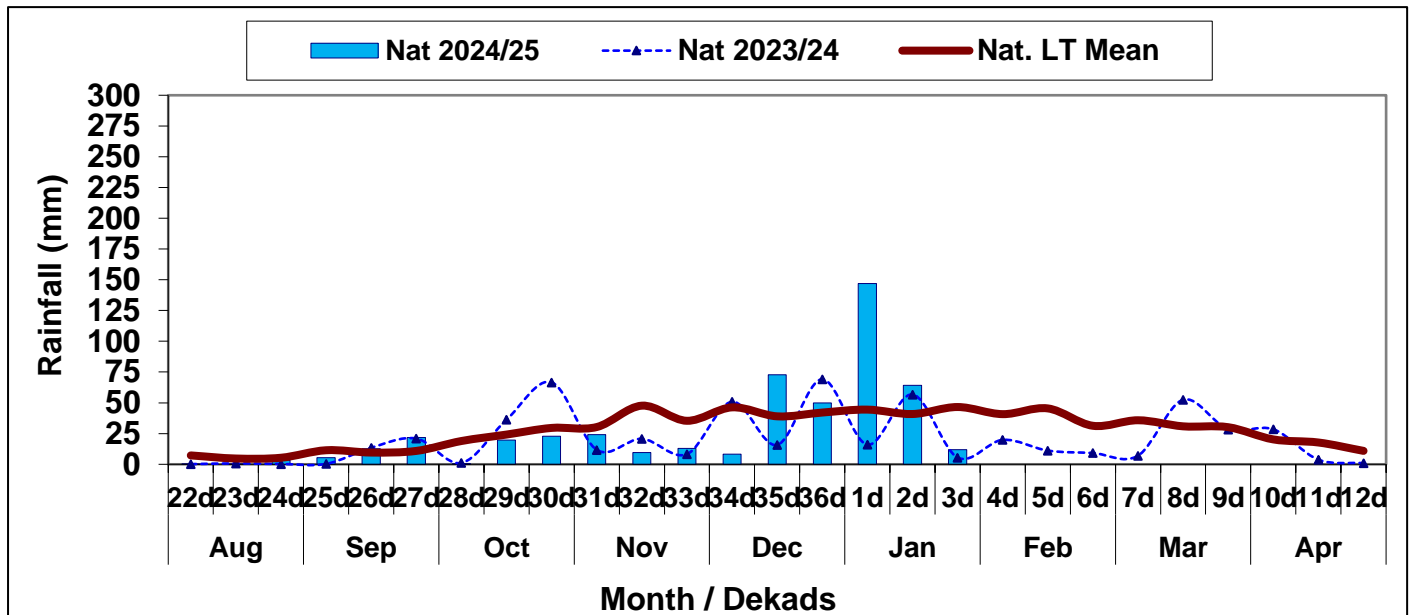
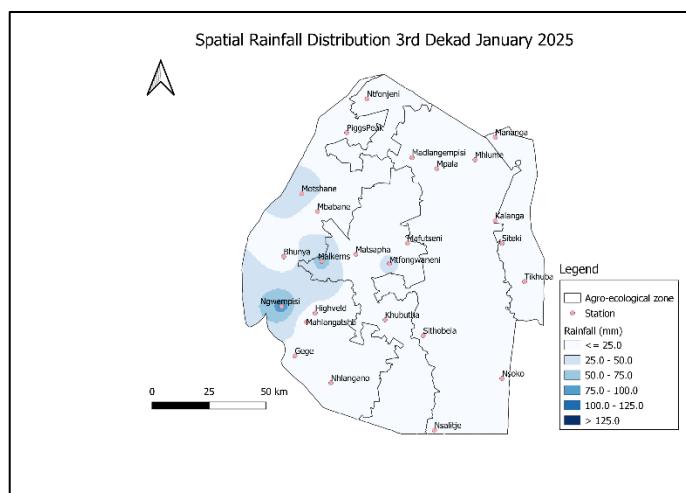
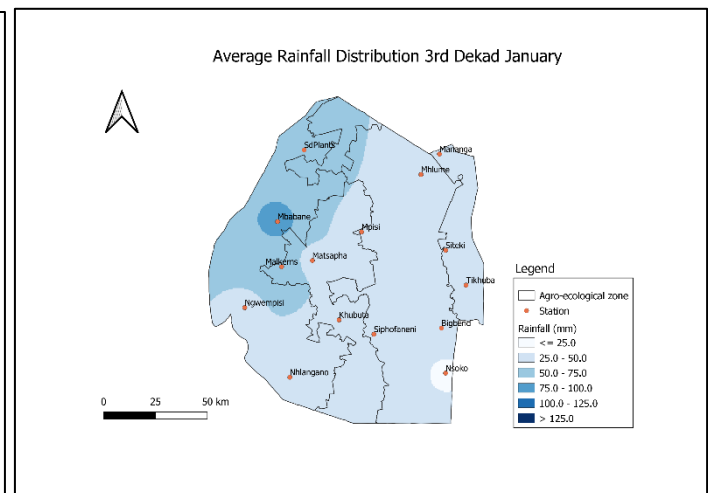


Figure 1: Rainfall distribution 3rd dekad January 2025



Map 1: Spatial rainfall distribution 3rd dekad January 2025



Map 2: Average Rainfall distribution 3rd dekad January

Compiled and Issued by: Agrometeorological Unit,

Swaziland Meteorological Service, Ministry of Tourism and Environmental Affairs.

Box 2652, Mbabane, Swaziland. (+268) 2404 8859 / 2404 6274. Fax: 2404 1530

E-mail: dudu@swazimet.gov.sz

AGROMETEOROLOGICAL BULLETIN

Doc No: TEA 3/3/7/2 F-004

Revision No: 1

Effective Date: 01.07.2017

Page No: 3 of 5

Approved by:

All the Agro-ecological zones observed rainfall below their long-term threshold (**Table 1**).

Table 1: Rainfall (mm) 3rd dekad January 2025

	HV	MV	LV	LP
2023/24	9	5	2	8
Average	61	49	34	44
2024/25	18	13	2	11
Anomaly	-43	-36	-31	-33

TEMPERATURES

Warm to hot temperatures were observed during the reporting period (**Figure 2**) and (**Figure 3**).

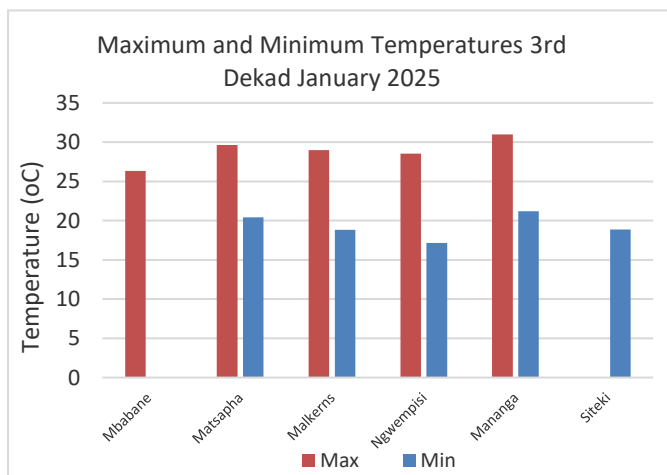


Figure 2: Maximum and Minimum temperatures 3rd dekad of January 2025

MAIZE AND OTHER CROPS

MAIZE CROP STAGE AND CONDITION

Maize is mostly at vegetative and stage and in good condition.

OTHER CROPS

Beans reported to have planted.

CURRENT FARMING ACTIVITY

Some farmers are planting some legumes, such as, beans.

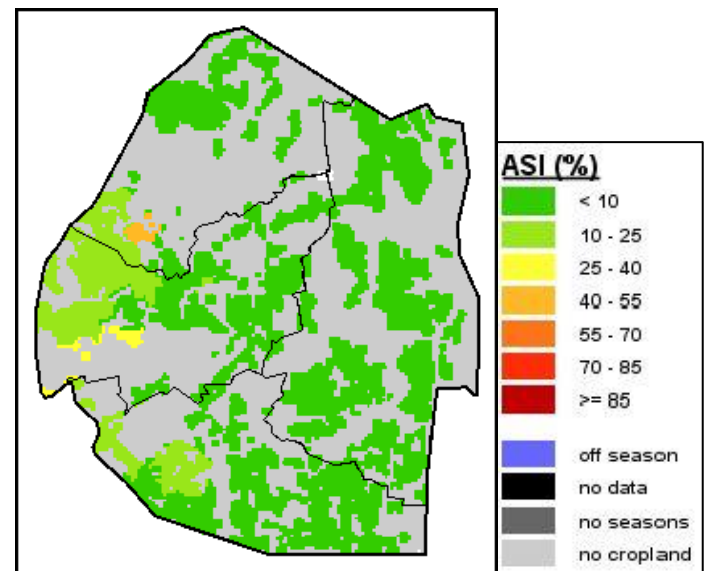


Image 1: Agriculture Stress Index 3rd dekad January 2025
Source: FAO-GIEWS

LIVESTOCK AND PASTURES

Livestock is in good condition as rangelands are reported to be in good condition with water availability.

Compiled and Issued by: Agrometeorological Unit,

Swaziland Meteorological Service, Ministry of Tourism and Environmental Affairs.

Box 2652, Mbabane, Swaziland. ☎ (+268) 2404 8859 / 2404 6274. Fax: 2404 1530

E-mail: dudu@swazimet.gov.sz

AGROMETEOROLOGICAL BULLETIN

Doc No: TEA 3/3/7/2 F-004

Revision No: 1

Effective Date: 01.07.2017

Page No: 4 of 5

Approved by:

WATER SITUATION

Most dam reservoirs are at full capacities.

MEDIUM-TERM OUTLOOK

RAINFALL

Normal rainfall is forecasted for the outlook period.

TEMPERATURE

Cool to warm temperatures are anticipated in the outlook period.

SOIL MOISTURE

An improvement in soil moisture is expected in the outlook period.

WIND SPEED

Wind will generally be light to moderate in the outlook period

NB: Outlook period is ten days from date of issue

Compiled and Issued by: Agrometeorological Unit,

Swaziland Meteorological Service, Ministry of Tourism and Environmental Affairs.

Box 2652, Mbabane, Swaziland.  (+268) 2404 8859 / 2404 6274. Fax: 2404 1530

E-mail: dudu@swazimet.gov.sz

AGROMETEOROLOGICAL BULLETIN

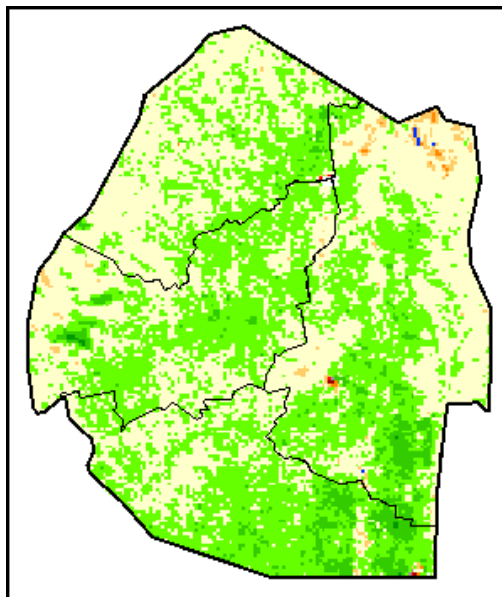
Doc No: TEA 3/3/7/2 F-004

Revision No: 1

Effective Date: 01.07.2017

Page No: 5 of 5

Approved by:

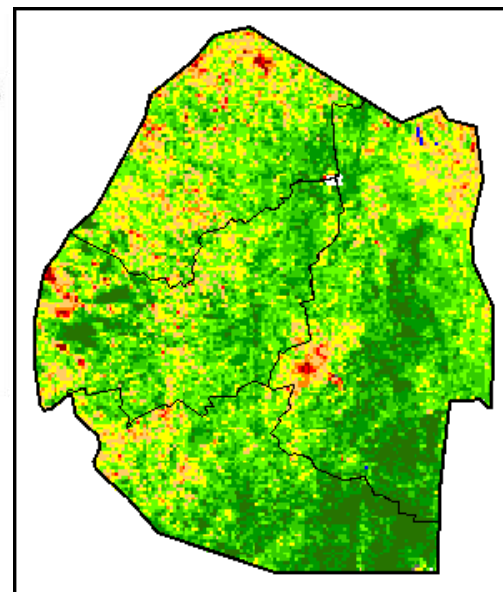


Legend

Difference to LTA



Image 2: Normalized Difference Vegetation Index (NDVI) Anomaly (3rd Dekad January 2025)
Source: FAO-GIEWS



Legend

VHI

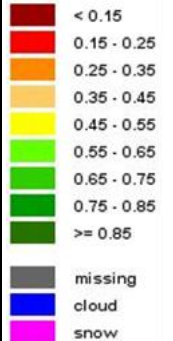


Image 3: Vegetation Health Index (VHI) (3rd Dekad January 2025)
Source: FAO-GIEWS

Compiled and Issued by: Agrometeorological Unit,

Swaziland Meteorological Service, Ministry of Tourism and Environmental Affairs.

Box 2652, Mbabane, Swaziland. ☎ (+268) 2404 8859 / 2404 6274. Fax: 2404 1530

E-mail: dudu@swazimet.gov.sz